



Cable ID: A

Date / Time: 11/11/2017 02:48:02 PM
 Headroom -2.6 dB (RL 78)
 Test Limit: TIA Cat 5e Perm. Link
 Cable Type: Cat 5 U/UTP
 NVP: 69.0%

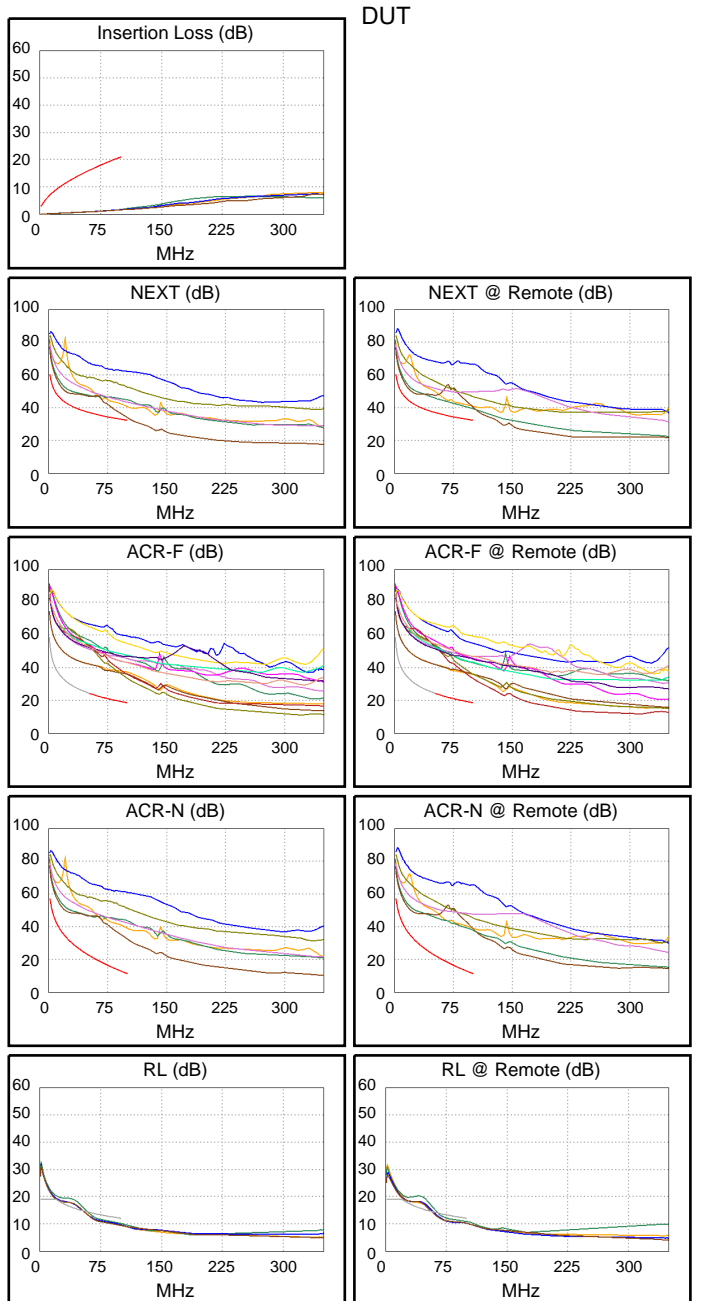
Operator: CM
 Software Version: 2.7700
 Limits Version: 1.9400

Test Summary: PASS

Model: DTX-1800
 Main S/N: 8644016
 Remote S/N: 8631002
 Main Adapter: DTX-PLA002
 Remote Adapter: DTX-PLA002

Wire Map	1	2	3	4	5	6	7	8	s
PASS									
(T568B)	1	2	3	4	5	6	7	8	s

Length (ft), Limit 295	[Pair 12]	0
Prop. Delay (ns), Limit 498	[Pair 12]	0
Delay Skew (ns), Limit 44	[Pair 12]	0
Resistance (ohms)	[Pair 45]	0.6
Insertion Loss Margin (dB)	[Pair 36]	19.4
Frequency (MHz)	[Pair 36]	100.0
Limit (dB)	[Pair 36]	21.0



Worst Case Margin Worst Case Value

PASS	MAIN	SR	MAIN	SR
Worst Pair	36-45	36-45	36-45	12-45
NEXT (dB)	1.7	6.7	1.7	7.1
Freq. (MHz)	100.0	23.1	100.0	100.0
Limit (dB)	32.3	42.7	32.3	32.3
Worst Pair	36	45	36	45
PS NEXT (dB)	3.9	7.1	3.9	7.3
Freq. (MHz)	99.0	23.1	100.0	100.0
Limit (dB)	29.4	39.7	29.3	29.3

PASS	MAIN	SR	MAIN	SR
Worst Pair	36-45	45-36	36-45	45-36
ACR-F (dB)	14.9	14.8	14.9	14.8
Freq. (MHz)	99.5	99.5	100.0	100.0
Limit (dB)	18.7	18.7	18.6	18.6
Worst Pair	45	36	45	36
PS ACR-F (dB)	17.3	15.8	17.3	15.8
Freq. (MHz)	99.5	99.5	100.0	100.0
Limit (dB)	15.7	15.7	15.6	15.6

N/A	MAIN	SR	MAIN	SR
Worst Pair	36-45	36-45	36-45	12-45
ACR-N (dB)	15.1	15.1	21.2	26.6
Freq. (MHz)	13.6	13.6	100.0	100.0
Limit (dB)	39.1	39.1	11.3	11.3
Worst Pair	45	45	36	45
PS ACR-N (dB)	15.7	15.5	23.3	26.8
Freq. (MHz)	10.5	13.6	100.0	100.0
Limit (dB)	38.8	36.1	8.3	8.3

N/A	MAIN	SR	MAIN	SR
Worst Pair	78	45	12	12
RL (dB)	-2.6	-2.4	-2.5	-1.8
Freq. (MHz)	75.0	76.3	100.0	99.8
Limit (dB)	13.3	13.2	12.0	12.0

Compliant Network Standards:
 10BASE-T 100BASE-TX 100BASE-T4
 1000BASE-T ATM-25 ATM-51
 ATM-155 100VG-AnyLan TR-4
 TR-16 Active TR-16 Passive

**Cable ID: A**Cat 5 U/UTP
11/11/2017 02:48 PMTIA Cat 5e Perm. Link
DTX-1800Headroom (RL): -2.6 dB
S/N: 8644016**PASS**

Tests	Detail	Status	Value	Limit	Margin
Insertion Loss (dB)	Pair 36, 100.0 MHz	PASS	1.6	21.0	19.4
NEXT (dB)	Pair 36-45, 100.0 MHz	PASS	34.0	32.3	1.7
PS NEXT (dB)	Pair 36, 99.0 MHz	PASS	33.3	29.4	3.9
ACR-N (dB)	Pair 36-45, 13.6 MHz		54.2	39.1	15.1
PS ACR-N (dB)	Pair 45, 13.6 MHz		51.6	36.1	15.5
ACR-F (dB)	Pair 45-36, 99.5 MHz	PASS	33.5	18.7	14.8
PS ACR-F (dB)	Pair 36, 99.5 MHz	PASS	31.5	15.7	15.8
RL (dB)	Pair 78, 75.0 MHz		10.7	13.3	-2.6
Length (ft)	Pair 12	PASS	0	295	295
Prop. Delay (ns)	Pair 12	PASS	0	498	498
Delay Skew (ns)	Pair 12	PASS	0	44	44
Resistance (ohms)	Pair 45		0.6		
Wire Map		PASS			